

---

## Use cases

---



**Online help: [www.P4C.philips.com](http://www.P4C.philips.com)**

For interactive help, downloads and frequently asked questions

<b>Using Windows® XP Media Center .....</b>	<b>4</b>
Control & navigation .....	4
<b>My TV .....</b>	<b>5</b>
Watching live TV .....	5
Using the time-shift function .....	5
TV guide function - Seeking a TV program .....	6
Manual channel search .....	7
Recording TV programs .....	8
Watching recorded TV programs .....	9
<b>Play DVD .....</b>	<b>10</b>
<b>My Music .....</b>	<b>11</b>
Playing a CD.....	11
Adding music to Media Center's hard disk drive .....	11
Adding music to your Media Library .....	11
Playing music from your Media Library .....	12
Like Music .....	12
<b>My Pictures .....</b>	<b>15</b>
Adding and organizing pictures .....	15
Viewing pictures .....	15
Slide show .....	15
<b>My Videos .....</b>	<b>16</b>
Playing videos .....	16
<b>Capturing digital video .....</b>	<b>17</b>
<b>Other functions .....</b>	<b>18</b>
Online Spotlight .....	18
Create CD or DVD .....	18
Messenger .....	18
Sync to Device - media content for portable devices .....	19
Make DVD 2.0 .....	19
DVD settings .....	19
<b>Troubleshooting .....</b>	<b>20</b>
<b>Information to the consumer .....</b>	<b>21</b>



After starting your Philips Media Center, Windows® XP Media Center starts automatically.




## Control & navigation

- When you move the cursor with the integrated trackball of your keyboard, the Windows® XP Media Center menu bar and playback controls toolbar appear.
  - Use the media playback controls of the toolbar for playback and record functions, volume up/down and channel up/down.
  - Use the remote control **navigation keys** (◀ ▶ ▲ ▼ - 6) to select a Windows® XP Media Center menu option and press the **OK** key (19) to activate the menu option. The **OK** key (19) is also used to confirm selections that you make.
  - To switch between Windows® XP Media Center edition and the Windows® XP desktop:
    - use the mouse on the keyboard to click on the minimize key (—) in the upper right corner of the screen to display the desktop;
    - use the mouse on the keyboard to click on the restore down key (☐) in the upper right corner of the screen to resize the active window;
    - to return to Media Center:
      - click the Media Center taskbar key (Media Center) with the mouse on the keyboard.
- OR:**  
Press the Start key (⊞) on the remote control or the Start key (⌂) on the keyboard.






*Note: The figures between brackets refer to the keys on the remote control as described in the Quick Install Guide.*

**My TV** provides you with all necessary functions to watch live TV and buffered TV (time-shift function), record TV programs, search for TV programs and change TV settings.

## Watching live TV

1 Press the Live TV ( - 21) key on the remote control.

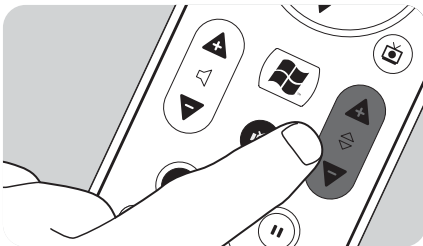
**OR:**

1 Press the  key (8) on the remote control and use the **navigation keys** (    - 6) to select My TV.

2 Select **Live TV** and press **OK** (19).

> The current TV program appears in full-screen mode.

3 Use the - **Program +** keys (17) on the remote control to select the channel you want to watch. You can also directly select a channel by entering the channel number with the numeric keys (12) on your remote control.



## Using the time-shift function


Once you start watching a TV program, Windows<sup>®</sup> XP Media Center starts recording the selected program in the background for up to 30 minutes. This buffer enables you to stop watching and continue at a later moment without missing anything of the program. The playback controls (11) Pause (11), Rewind (12), and Fast-Forward (13) on the remote control and the keyboard can be used to control the time-shift function.

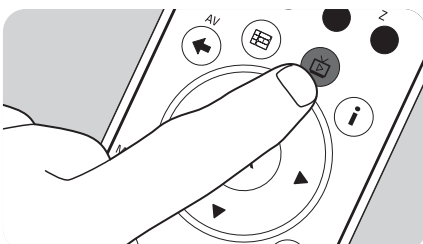
1 While watching TV, press the **Pause** (11) key (11) on the remote control.

> The time-shifting window appears.

2 Press the **Pause** (11) key (11) again to continue watching TV from where playback was paused.



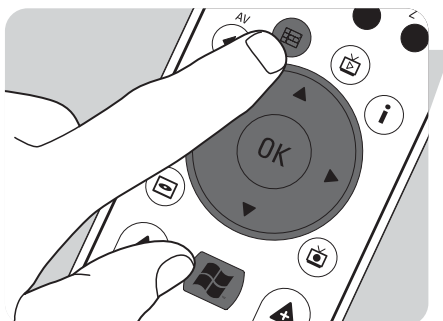
3 You can return to the live broadcast by pressing the **Live TV** key ( - 21) on the remote control.



## TV guide function - Seeking a TV program

The guide displays information on channels, TV programs and program schedules. This information is retrieved from your local television service provider. The guide can be updated automatically or manually.

*Note: Make sure that an internet connection is established for your Media Center.*



### Using the guide

1 Press the **Windows** key (8) on the remote control.  
> The Media Center Start menu appears.

2 Press the **Guide** (⌘) key (4) on the remote control.

#### OR:

1 Select **My TV** and press the **OK** key (19) on the remote control.

2 Select **Guide** and press the **OK** key (19) on the remote control.

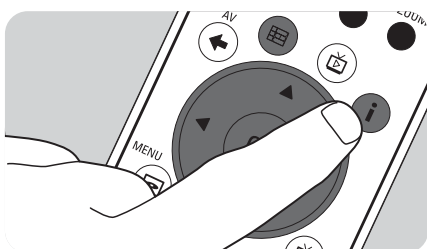


3 Use the remote control **navigation keys** (◀ ▶ ▲ ▼ - 6) to select a channel and to scroll through the program information for that channel.

4 Press the **OK** key (19) to:

– watch a selected TV program that has already started.

– schedule a recording of a TV program that starts later. Select one of the options in the window that appears.



### Setting Guide preferences

1 Press the **Guide** (⌘) key (4) on the remote control or keyboard.

2 Press the **i** (info) key (20) on the remote control.

3 Select **Settings** and press the **OK** key (19).

4 Select **TV** and press the **OK** key (19).

5 From the **TV Settings** window, select **Guide** and press the **OK** key (19).



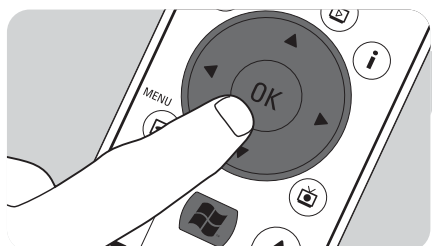
In the **Guide Settings** window you have access to the following Settings-submenus:


- **Change Channel Order:** to change the order of the channels in the Guide.
- **Edit Channels:** to add or remove channels and to change channel numbers.
- **Add Missing Channels:** to add new channels to the Guide.
- **Restore Channel Defaults:** to restore default settings for channels.
- **Set Up Guide Listing:** to configure the Guide.
- **Get Latest Guide Listing:** to download the latest Guide information.
- **Guide Terms of Service:** download legal information about the Guide service.
- **About Guide Listings:** to display information about software, connection, and TV signal source.

### Automatically downloading TV program guide information

You can set up Media Center to automatically download the latest TV program guide information.

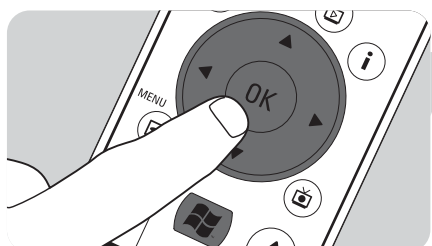
*Note: You must have selected your local television service provider, before you can use the Guide. See 'Optional setup - Configure tuners, TV signal and guide' option in the quick install guide supplied.*




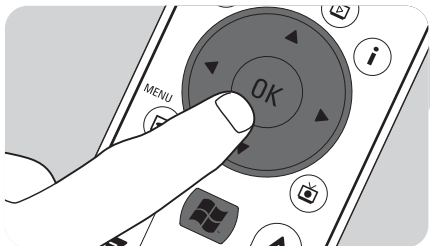
- 1 Press the  key (8) on the remote control.
- 2 Select **Settings, General, Automatic Download Options**.
- 3 Select **Download when connected**.
- 4 Select **Save** and press the **OK** key (19) on the remote control.

### Seeking a TV program

You can search for a specific TV program by title, category, or keyword.




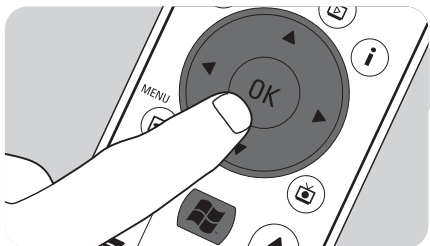
- 1 Press the  key (8) on the remote control .
- 2 Select **Search** from the **My TV** window and press the **OK** key (19) on the remote control.
- 3 Select the search option **Categories, Title, or Keyword** and press the **OK** key (19).
- 4 **Categories:**  
Select one of the available categories of TV program and press the **OK** key (19) on the remote control.  
**Title:**  
Use the keyboard to enter the title of the TV program in the text box, or use the **0 - 9 digit keys** (12) on the remote control to enter a title.  
**Keyword:**  
Use the keyboard to enter a keyword in the text box, or use the **0 - 9 digit keys** (12) on the remote control to enter a keyword.
- 5 Use the remote control **navigation keys** (◀ ▶ ▲ ▼ - 6) to scroll through the search results.
- 6 Press the **OK** key (19) to:
  - watch a selected TV program that has already started;
  - schedule a recording of a TV program that starts later. Select one of the options in the window that appears.



### Change channel order


To change the order of the TV channels in your preset channel list:

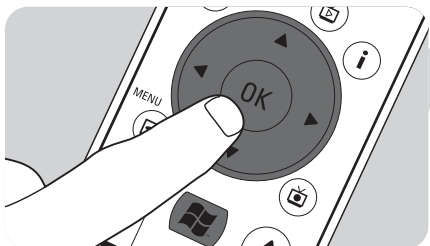
- 1 Press the  key (8) on the remote control.
- 2 Select **Settings** and press the **OK** key (19) on the remote control.
- 3 Select **TV**, then **Guide** and press the **OK** key (19).
- 4 Select **Change Channel Order** and press the **OK** key (19).
- 5 Select the on-screen up or down arrows and press the **OK** key (19) to change the position of a channel in the preset channel list.
- 6 Select **Save** to save your changes.



### Edit channels


To add or delete a TV channel to or from your preset channel list:

- 1 Press the  key (8) on the remote control.
- 2 Select **Settings** and press the **OK** key (19) on the remote control.
- 3 Select **TV**, then **Guide** and press the **OK** key (19).
- 4 Select **Edit Channels** and press the **OK** key (19).
- 5 Select or clear the check box to add or remove a channel from the preset channel list.
- 6 Select **Save** to save your changes.



### Add missing channels

Missing channels can be added manually:

- 1 Press the  key (8) on the remote control.
- 2 Select **Settings** and press the **OK** key (19) on the remote control.
- 3 Select **TV**, then **Guide** and press the **OK** key (19).
- 4 Select **Add Missing Channels** and press the **OK** key (19).
- 5 Select **Add Channel** and press the **OK** key (19).
- 6 Follow the on-screen instructions to enter a name and channel number.  
For information on TV channels contact your local television service provider.  
> The missing channel is added to the list of preset TV channels.

## Recording TV programs

The **My TV** feature enables you to record TV programs. You can record an individual episode or series of episodes of TV programs. You can schedule recordings and store recorded TV programs on your hard disk drive. With Windows<sup>®</sup> XP Media Center your recordings are easily organized and copied to a DVD.

### Recording a TV program while watching

You can record live TV programs while you are watching. Use one of these two methods:

- Press the Record () key (11) on the remote control or keyboard.


#### OR:

- Use the mouse (1) on the keyboard to click the **Record** key on the media playback toolbar.

If no program data is available, then the **Manual Record** window will appear.

- Enter all information to start recording the TV program.

### Stopping or interrupting a recording session

- 1 Press the Stop () key (11) on the remote control / keyboard.

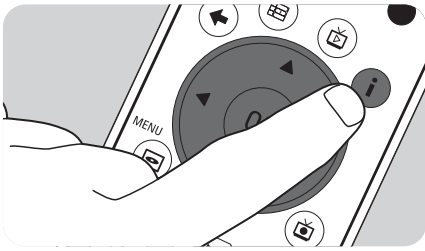
#### OR:

Use the mouse (1) on the keyboard to click the **Stop** key on the media playback toolbar.

- 2 Select **Yes** in the window that appears and press the **OK** key (19).







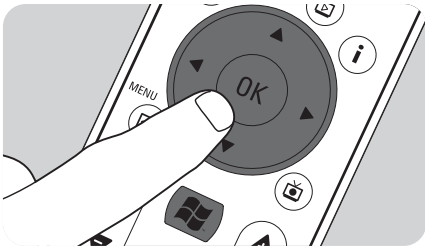
### Verifying a recording session

- 1 Press the **i** (info) key (20) on the remote control.
- 2 Select **Program info** in the window that appears and press the **OK** key (19).

### Scheduling a TV program recording

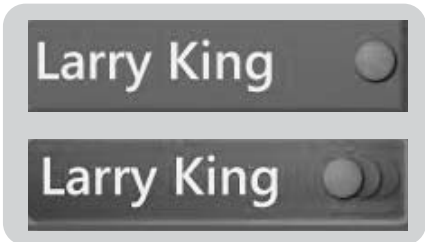
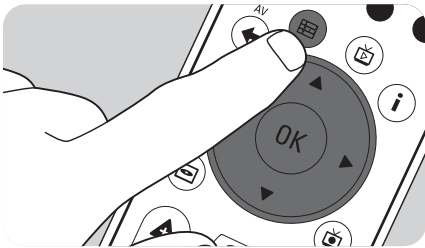
#### Manually:

- 1 Press the **Windows** key (8) on the remote control, select **My TV, Recorded TV** and press the **OK** key (19).
- 2 Select **Add Recording** and press the **OK** key (19).
- 3 Select channel number, recording frequency, date, start and stop time, the period for which you want to keep the recording and the recording quality.
- 4 Select **Record** and press the **OK** key (19).



#### Using the Guide:

- 1 Press the **Guide** (⏏) key (4) on the remote control or keyboard.
- 2 Use the remote control **navigation keys** (◀ ▶ ▲ ▼ - 6) to scroll through the programs that are scheduled.
- 3 Select the TV program you want to record.



- 4 Press the **Record** (●) key (11) on the remote control or keyboard.
  - Press once to record a single episode. The Record icon appears next to the program title.
  - Press twice to record a series of episodes. The Record Series icon appears next to the program title.
  - Press again to cancel the recording.
- 5 Press the **Back** (⏪) key (5) on the remote control to return to the previous window.

#### Notes:

- Scheduled TV program recording (timer recording) from standby is only possible if the Media Center has been placed in standby mode using the remote control.
- Scheduled TV program recording (timer recording) from a set-top box is only possible if the set-top box is switched on (not in standby!).
- If there is a recording conflict, Windows® Media Center displays a warning and allows you to change your recording schedule.

### Watching recorded TV programs

Recorded TV programs are saved on your hard disk drive. Each recording is displayed as a thumbnail in the **Recorded TV** window.

- 1 Press the **Recorded TV** (📺) key (18) on the remote control.

#### OR:

- 1 Press the **Windows** key (8) on the remote control, select **My TV, Recorded TV** and press the **OK** key (19).





> Your recorded TV programs are displayed in the **Recorded TV** window.

- 2 Use the remote control **navigation keys** (◀ ▶ ▲ ▼ - 6) to select a title, then select **Play** and press the **OK** key (19) to play the TV program.
  - > In the **Recorded TV** window options are displayed for sorting the recorded TV programs by date or by title. In this window you can also add and view scheduled TV program recordings.

### Deleting TV program recordings

TV program recordings that you do not want to retain, can easily be deleted.

**This will increase the storage capacity of your hard disk drive.**



- 1 Press the **Recorded TV** (📺) key (18) on the remote control.
- 2 Use the remote control **navigation keys** (◀ ▶ ▲ ▼ - 6) to select the program you want to delete and press the **OK** key (19).



- 3 Select **Delete** and press the **OK** key (19).
- 4 Select **Yes** in the **Delete Recording** window and press the **OK** key (19).

## Play DVD

**Play DVD** offers you all necessary functions to control DVD playback.




- 1 Press the **Play DVD** key (8) on the remote control.
- 2 Insert a DVD into the CD/DVD drive (3) of the Media Center.
  - > After a few seconds the DVD's introduction and menu appear.
- 3 Press the **Play** (▶) key (11) on the remote control to start playback.

If the DVD is already in the CD/DVD drive:

- Select **Play DVD** from the Media Center Start menu and press the **OK** key (19).
  - > The DVD starts playing in full-screen mode.

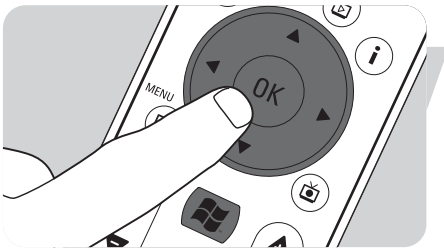
**My Music** offers you all functions to listen to CD's and to add and play the music files in the Windows® Media Player Library.

## Playing a CD

- 1 Press the  key (8) on the remote control.
- 2 Insert a CD into the CD/DVD drive (3) of the Media Center.
  - > After a few seconds CD playback starts and the CD track list is displayed.

If the CD is already in the CD/DVD drive:


- 1 Select **My Music** from the Media Center Start menu and press the **OK** key (19).
- 2 Select the CD in the **My Music** window and press the **OK** key (19).
- 3 Select **Play** to start playback.



## Adding music to Media Center's hard disk drive

To be able to listen to your favorite music from your Media Library, you first have to copy the music files to the Media Center's hard disk drive. You can copy music files from your own CDs or download them from the Internet.

*Note: The making of unauthorized copies of copy-protected material, including computer programs, files, broadcasts, film and sound recordings, may be an infringement of copyrights and constitute a criminal offence. This equipment should not be used for such purpose.*


- 1 Press the  key (8) on the remote control.
- 2 Insert a CD into the optical drive (3) of the Media Center.
- 3 Select **Copy CD** and press the **OK** key (19), select **Yes** in the **Copy CD** window and press the **OK** key (19).
  - > Your music files are stored in the Windows® folder **My Music** on Media Center's hard disk drive.

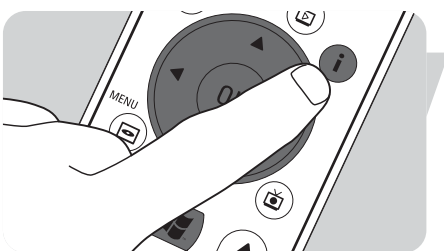


*Note: Music files retrieved from other sources, such as downloads from the Internet for example, can also be stored in the Windows® folder My Music.*

## Adding music to your Media Library


If you want to playback music files in Windows® Media Center, you need to create a Media Library.

- 1 Press the  key (8) on the remote control, select **My Music** and press the **OK** key (19).
- 2 Press the **i** (info) key (20) on the remote control, select **Add Music** and press the **OK** key (19).
- 3 Select **Add folders** and then select **Next**.
- 4 Select **Add folders on this computer** and then select **Next**.
- 5 Use the remote control **navigation keys** (◀ ▶ ▲ ▼ - 6) to select a location. Press the **OK** key (19) to expand a folder. Check the folder(s) containing music files.
- 6 Select **Next** and then select **Finish**.





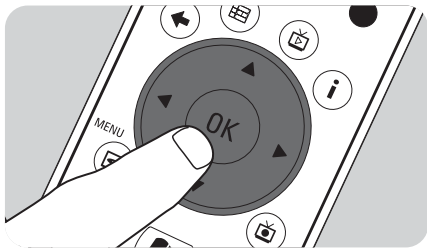
## Playing music from your Media Library

- 1 Press the  key (8) on the remote control, select **My Music** and press the **OK** key (19).
  - > In the **My Music** window you have access to your music files sorted by album, by artist, by song or by genre. You can also browse the playlists you have generated in Windows<sup>®</sup> Media Player or make use of the search function.

### Queue list

With a queue list, a temporary list of songs created in **My Music**, you can have songs or albums to play continuously, shuffle, and repeat.

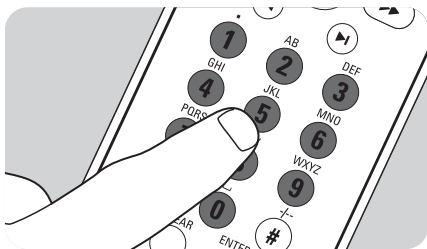
- 1 From the **My Music** window, select an album or a song and press the **OK** key (19).
- 2 Select **Add to Queue** and press the **OK** key (19).



### Playlist


A playlist is used as a customized list of songs, stored to be played later or to be recorded to CD. Normally you would create a playlist in Windows<sup>®</sup> Media Player. There is a way however to create playlists from within Windows<sup>®</sup> Media Center.

- 1 Select **My Music** and then select either **Albums**, **Artists**, **Playlists**, **Songs**, or **Genres**.
- 2 Use the remote control **navigation keys** (◀ ▶ ▲ ▼ - 6) to select the music files you want to add to your playlist and press the **OK** key (19).
- 3 Select **Add to Queue** in the **Song Details** window and press the **OK** key (19).
- 4 Select the inset window in the lower-left corner and press the **OK** key (19).
- 5 Select **Edit Queue** in the **Queue window** and press the **OK** key (19).
- 6 Select **Save As Playlist** and press the **OK** key (19).
- 7 Use the keyboard or the **0 - 9 digit keys** (12) on the remote control to enter a name for the playlist.
- 8 Then select **Save**.

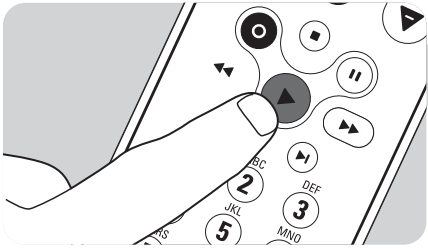


## LikeMusic

If you enjoy a particular song, you can have the LikeMusic feature generate a short playlist of songs in the same style. There are three different ways to activate the LikeMusic feature:

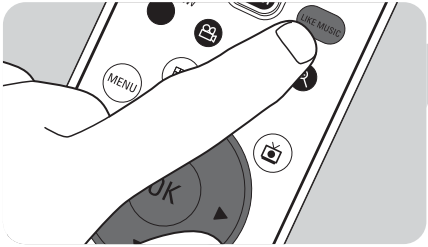
- 1 Select **My Music** and press the **OK** key (19).
- 2 Select **Songs** and select a song you like.
- 3 Press the **i** (info) key (20) on the remote control.
- 4 Select **More ...**
- 5 Select **LikeMusic** .
  - > A playlist of songs, similar to the selected song is now generated.
- 6 Now continue with the instructions under **Saving your playlist**.





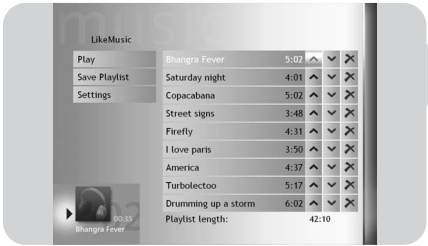
**OR:**

- 1 Select **My Music** and press the **OK** key (19).
- 2 Select a song you like and start playback using the ► (Play) key (11).
- 3 Select **More Programs** and press the **OK** key (19).
- 4 Select **LikeMusic**.  
> A playlist of songs, similar to the song currently playing is now generated.
- 5 Now continue with the instructions under **Saving your playlist**.



**OR:**

- 1 Select **My Music** and press the **OK** key (19).
- 2 Select a song you like and start playback using the ► (Play) key (11).
- 3 Press the **LIKE MUSIC** key (23) on the remote control.  
> A playlist of songs, that are similar to the song currently playing is now generated.
- 4 Now continue with the instructions under **Saving your playlist**.



**Saving your playlist**

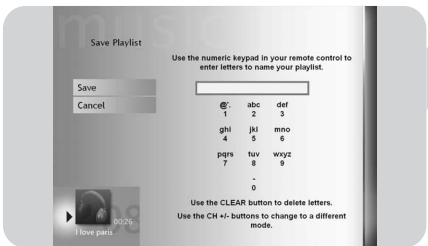
When the playlist is generated, the **LikeMusic** home screen appears and the new playlist is displayed. The first selected song (seed song) is highlighted. You now have the following options:

*Play:*

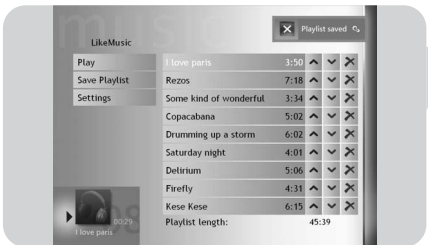
- Select **Play**.  
> The new playlist will now be played, starting with the seed song.

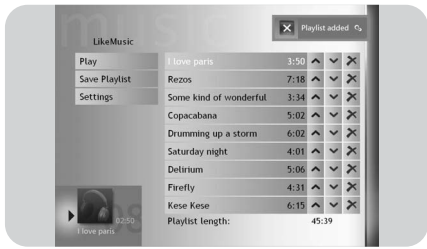
*Save playlist:*

- 1 Select **Save Playlist**.  
> The **Save playlist** screen appears.
- 2 Use the **0 - 9 digit keys** (12) to enter a name for the playlist.
- 3 Select **Save**.



> The playlist will now be saved under **Playlists** in **My Music**.





### Settings:

Under **Settings** you can choose to either add the new playlist to the existing queue list (created via Windows<sup>®</sup> Media Player) or to replace the existing queue list with the new playlist.

- 1 Select **Settings**.
- 2 Check the **Replace Queue** box if you wish to replace the existing queue list. Then select **Save**.
  - > *The existing Queue list will now be replaced with the new list.*

### OR:

- 2 Leave the **Replace Queue** box empty if you wish to add the new list to the existing queue list. Then select **Save**.
  - > *The new list will now be added to the existing queue list.*

With **My Pictures** you display your digital image files, individually or as a slide show. You can use digital image files from many sources, such as a digital camera, a scanner, or from a CD or other storage media. To view pictures in Windows<sup>®</sup> XP Media Center's **My Pictures**, you first have to add and organize your picture files into the Windows<sup>®</sup> XP **My Pictures** or **Shared Pictures** folders.

## Adding and organizing pictures

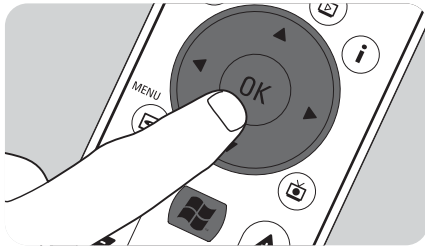
- 1 Click **Start** on the taskbar of the Windows<sup>®</sup> XP desktop.
- 2 Click **My Pictures**.  
> The **My Pictures** window opens.
- 3 Make (a) new folder(s) in the **My Pictures** folder for storing your picture files.

## Cameras and Media Cards


When you connect your digital photo camera to one of the USB ports of the Media Center, Windows<sup>®</sup> XP will automatically recognize it. The same applies to Media Cards inserted in the card readers on the front of the Media Center.



- 1 Select **Viewing Pictures** in the inset window in the upper right corner and press the **OK** key (19).
- 2 Select **Import** to copy all the picture files to a folder for which you can enter a name with the keyboard or the **0 - 9 digit keys** (12) on the remote control.




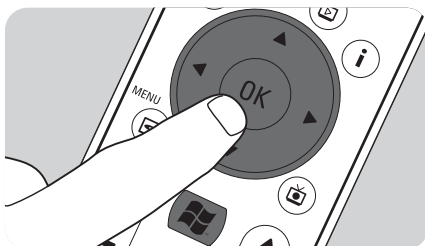
## Viewing pictures

- 1 Press the  key (8) on the remote control.
- 2 Select **My Pictures**.  
> The right side of the window shows a thumbnail of a picture and, if you have created folders, folder icons.
- 3 Use the remote control **navigation keys** (◀ ▶ ▲ ▼ - 6) to search for a picture in the listed picture files and folders.
- 4 Select a picture and press the **OK** key (19).  
> The selected picture opens in full-screen mode.
- 5 Press the **OK** key (19) once to zoom in 150%, press the **OK** key (19) twice to zoom in 225%. Use the remote control **navigation keys** (◀ ▶ ▲ ▼ - 6) to pan across the picture.
- 6 Press the **OK** key (19) a third time to return to the original size.

## Slide show

To view your pictures in a slide show:

- 1 Press the  key (8) on the remote control.
- 2 Select **My Pictures**.
- 3 Select the folder of pictures you want to view as a slide show and press the **OK** key (19).
- 4 Select **Play Slide Show** and press **OK** key (19).



# My Videos

With **My Videos** you can play video files recorded with your digital video camera or downloaded from the Internet. Media Center saves your videos, including the TV program recordings you made, in the Windows<sup>®</sup> XP **My Videos** folder and the **Shared Video** folder.

## Access to Windows<sup>®</sup> XP **My Videos** and **Shared Video** folders


Video files can be stored in folders you create and name yourself. All files should be stored in the Windows<sup>®</sup> XP **My Videos** folder and the **Shared Video** folder.

### To open the **My Videos** folder:

- 1 Click **Start** on the taskbar of the Windows<sup>®</sup> XP desktop.
- 2 Click **My Documents**.  
> The **My Documents** window opens.
- 3 Click the **My Videos** folder.  
> The **My Videos** window opens, displaying your available video files.

Note: The **My Videos** folder only appears in the **My Documents** window after you have accessed **My Videos** in Media Center.

### Adding/removing folders to the **My Videos** folder:

- 1 Press the  key (8) on the remote control.
- 2 Select **My Videos** and press the **OK** key (19).
- 3 Press the **i** (info) key (20) on the remote control.
- 4 Select **Add folders** and press the **OK** key (19).
- 5 Select **Add folders** or **Remove folders**, select **Next** and follow the onscreen instructions.


### To open the **Shared Video** folder:

- 1 Click **Start** on the taskbar of the Windows<sup>®</sup> XP desktop.  
> The **User** window appears.
- 2 Click **My Computer**.  
> The **My Computer** window opens.
- 3 Double click on the **Shared Documents** folder.  
> The **Shared Documents** window opens. One of the folders displayed is the **Shared Video** folder.
- 4 Double click on the **Shared Video** folder.  
> The **Shared Video** window opens, displaying your available shared video files.

## Playing videos

The contents of the Windows<sup>®</sup> XP folders **My Videos** and **Shared Video** both appear in the Media Center's **My Videos** window.



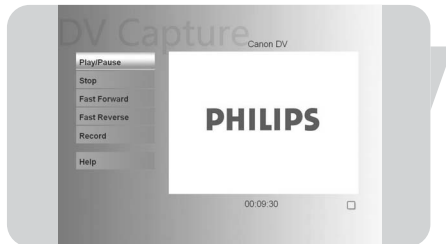
- 1 Press the  key (8) on the remote control.
- 2 Select **My Videos** and press the **OK** key (19).
- 3 Select a video folder and press the **OK** key (19).  
> The video folder opens, displaying a list of video files.
- 4 Select the video file you want to play and press the **OK** key (19).  
> The video file plays in full-screen mode.




## Capturing Digital Video

To capture your own digital video camera recordings, you have to connect your digital video camera to the Media Center using the:

**FIREWIRE (IEEE1394 / i.LINK)** connector (16) **OR** the **USB 2.0** connector (15). See 'Connecting a video camera (or other portable external source)' in the quick install guide.



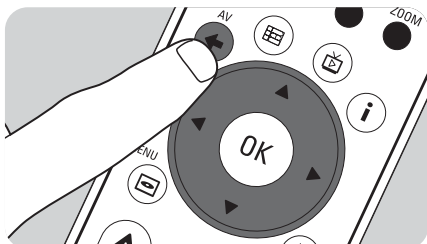
- 1 Make sure to connect the camera first before starting the **DV Capture** program.
- 2 Press the  key (8) on the remote control.
- 3 Select **More Programs** and then select **DV Capture**.  
> Your camera's playback functions can completely be controlled from the **DV Capture** window.
- 4 Select the beginning of the sequence you want to capture.
- 5 Select **Record** in the **DV Capture** window to start capturing the recording from your video camera.
- 6 Select **Stop** in the **DV Capture** window to stop capturing.  
> The file is stored in the Windows<sup>®</sup> XP **My Videos** folder.  
> In Media Center's **My Videos**, you have access to your new video file.
- 7 Make sure to exit the **DV Capture** program before disconnecting the camera.


## Other functions

### Online Spotlight

In Windows® XP Media Center's **Online Spotlight** new ways of using your Media Center are presented. **Online Spotlight** links to the Media Center Web site for the latest links to online media and information services.

*Note: To be able to use **Online Spotlight**, make sure that an Internet connection is established for your Media Center.*

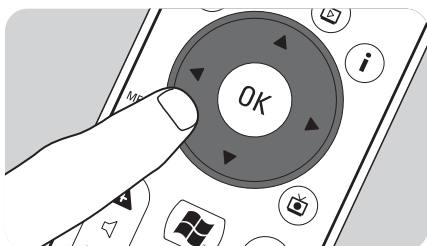



- 1 Press the  key (8) on the remote control.
- 2 Select **Online Spotlight**.
- 3 Use the remote control **navigation keys** (◀ ▶ ▲ ▼ - 6) to browse the information categories.
- 4 Press the **Back** (↶) key (5) on the remote control when finished, to return to the Windows® XP Media Center main menu.

### Create CD or DVD

The **Create CD/DVD** function enables you to compile a CD or DVD and burn the contents to a recordable disc.

*Note: DVDs created using the **Create CD/DVD** function are only playable on Media Center PCs, not on standalone DVD-players.*



- 1 Press the  key (8) on the remote control.
- 2 Select **More Programs**.
- 3 Select **Create CD/DVD**.
- 4 Insert a recordable disc (CD or DVD) and select **OK** in the **Insert Media** inset window.
- 5 Select **Create CD/DVD** in the upper right inset window.

#### for a CD:

- 6 Select the **Audio CD** or **Data CD** option.
- 7 Follow the on-screen instructions for adding contents to your CD.
- 8 Select **View CD** when your finished.
- 9 Select **Create CD** and **Yes** in the **Initiating Copy** inset window.


#### for a DVD:

- 10 Follow the onscreen instructions for adding contents to your DVD.
- 11 Select **View DVD** when you are finished.
- 12 Select **Create DVD** and **Yes** in the **Initiating Copy** inset window.

### Messenger

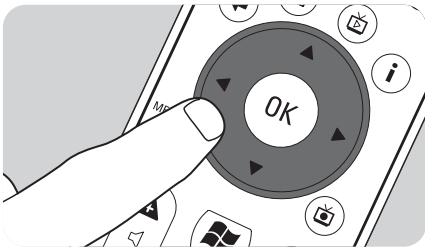
You can log on to the Internet and have online instant messaging conversations, while listening to music, watching TV or DVDs, or viewing your pictures. Check <http://www.msn.com> first to set up your messenger account. You will need a .NET passport, consisting of an e-mail address, a login name and a password. With your .NET passport you can log in to Messenger.



- 1 Press the  key (8) on the remote control.
- 2 Select **More Programs** and then select **Messenger**.
- 3 Select **Sign In** in the **Media Center Messenger** inset window.
- 4 Enter your .NET passport information and select **Sign In**.

## Sync to Device – media content for portable devices

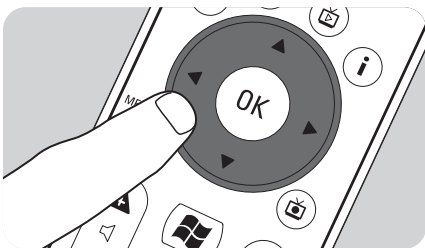
You can synchronize music, pictures, videos, or recorded TV programs to compatible portable devices like mp3 players, smartphones or pocket PCs. Use the Media Center **Help** for more details about using Media Center with portable devices.



- 1 Connect your portable media device to your Media Center.
  - 2 Select **Yes** when you are asked to sync content to the portable media device.
- OR:**
- 2 Press the key (8) on the remote control, select **More Programs** and then select **Sync to Device**.
  - 3 Use the remote control **navigation keys** (◀ ▶ ▲ ▼ - 6) to move a playlist up or down in the list. The playlist at the top of the list is synchronized to the portable device first.
- OR:**
- 3 Select **Delete** next to a playlist you do not want to transfer to the device.
- OR:**
- 3 Select **Add More** to select other media categories you want to add to the list.
  - 4 Select **Start Sync**.

## Make DVD 2.0

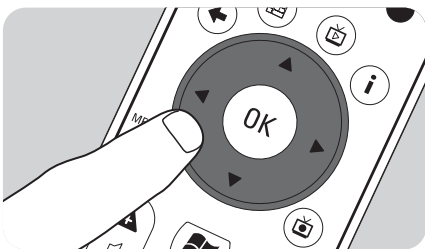
With the MakeDVD 2.0 software you can select and author video files and copy them to a DVD in one single and easy to use application.



- 1 Press the key (8) on the remote control.
- 2 Select **More Programs**.
- 3 Select **Make DVD 2.0**.
- 4 Select the video files you want to author and copy to DVD and follow the on-screen instructions.

## DVD Settings

In the DVD Settings window, you can change the audio and video settings for DVD playback.



- 1 Press the key (8) on the remote control.
  - 2 Select **More Programs**.
  - 3 Select **DVD Settings**.
  - 4 Select **Video Settings** to select the available picture enhancement features:
    - Trimension** is the picture quality improvement software installed on your Philips Media Center. By selecting **Picture Quality Demo** under **More Programs** you can start a demo on which you can see the difference in quality of images with and without Trimension processing.
    - Eagle Vision** makes images brighter and colors more natural. It intelligently enhances image details.
    - Pano Vision** enables you to watch films that have been encoded with a 4:3 screen ratio on a wide screen monitor, or vice versa, with very little distortion.
- Select **Audio Settings** to select **Audio Environment** and the type of **Dynamic Range Compression**.

## Scheduled TV program recording (Timer recording) does not work.

Scheduled TV program recording (timer recording) from standby is only possible if the Media Center has been placed in standby mode using the remote control.

- Repeat the 'Scheduling a TV program recording' procedure. Use the remote control to switch the Media Center to standby mode.

## Scheduled TV program recording (Timer recording) from the set-top box does not work.

Scheduled TV program recording (timer recording) from a set-top box is only possible if the set-top box is switched on (not in standby!).

- Switch on the set-top box and repeat the 'Scheduling a TV program recording' procedure.

## Media Center System Recovery

To recover factory shipped applications, drivers and the operating system, use the System Recovery feature.

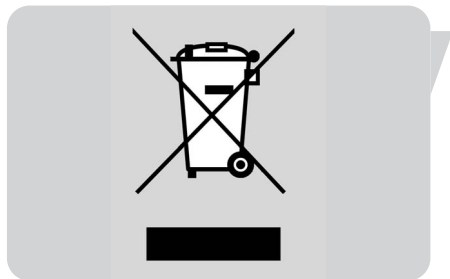
- 1 Click **Start** on the Windows XP taskbar and click **All programs**.
  - 2 Select the **System Recovery** folder and click **System Recovery**.
- OR:**
- 1 Restart the Media Center.
  - 2 Press **F11** on Media Center's keyboard, shortly after the reboot of Windows XP starts.
    - > *The Media Center System Recovery appears.*
  - 3 Select the required recovery option and follow the on-screen instructions.

*Note: Be sure to back up your files **before** executing the **System Recovery – Quick Format option**. All your personal data files and applications installed after the Media Center was purchased, will be erased.*

### **Information to the Consumer**

#### *Disposal of your old product*

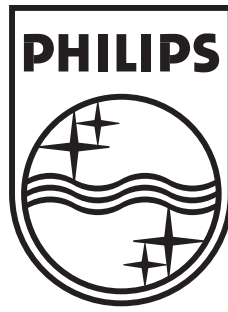
Your product is designed and manufactured with high quality materials and components, which can be recycled and reused.



When this crossed-out wheeled bin symbol is attached to a product it means the product is covered by the European Directive 2002/96/EC.

Please inform yourself about the local separate collection system for electrical and electronic products.

Please act according to your local rules and do not dispose of your old products with your normal household waste. The correct disposal of your old product will help prevent potential negative consequences for the environment and human health.



---

Specifications are subject to change without notice.  
Trademarks are the property of Koninklijke Philips Electronics N.V. or their respective owners.  
2005 © Koninklijke Philips Electronics N.V. All rights reserved.

[www.philips.com](http://www.philips.com)

---



**PHILIPS**